



Anti-Drop Diffuser  
索。鋁出風口

# Anti-Drop 索。鋁

## 旋力牌索。鋁出風口

是一種需經過多重工序處理及生產的高性能鋁質出風口。經過處理後的出風口，其表面會被一層高密度短纖維毛絨層所包裹，由於此纖維層具有隔熱保溫的功效同時亦具吸水性，所以能有效杜絕出風口表面因溫差所產生的冷凝水。而纖維層與鋁材質間的強力粘合力則有賴於經獨特配方調配的丙烯酸脂粘合劑。高強度的粘合力有效地避免了風阻因安裝、刮磨、膨脹及腐蝕所引致的纖維層剝落。

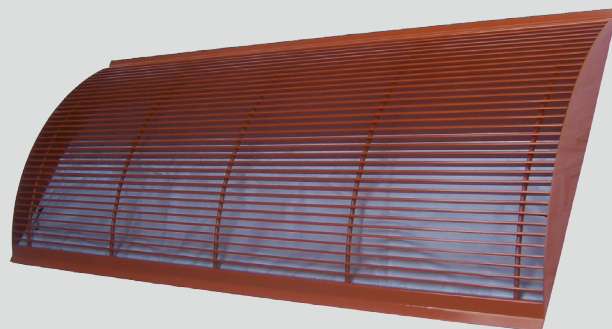


「它」在保留鋁質出風口尺寸及特質的同時，賦予其對抗惡劣環境的能力。

Anti-Drop Diffuser - retained the size and characteristics of Aluminum outlet, meanwhile, given itself the power to against the environment.

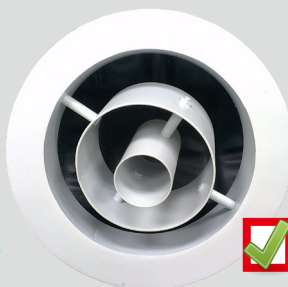
## Cycnix Anti-Drop Diffuser

is a high performance aluminum air outlet which required manufacture under multiple processing and production. Processed air outlet was covered by high density nylon fiber layer. These nylon fibers are heat insulation and hydrophile, therefore they can efficiently to stop the condensation formed due to temperature differences on the surface of air outlet. High viscosity adhesives - Acrylate, play an important role on bonding two materials together, to avoid the fiber layer peeling off due to the installation, scrape, swell and corrosion.



特製弧形線條出風口

Custom Made Curve Linear Diffuser



圓形噴射口

Round Jet



圓形吊頂散流器

Round Ceiling Diffuser

索。鋁出風口可製成：  
Anti-Drop diffuser can be made on,



方形吊頂散流器

Square / Rectangular Ceiling Diffuser



固定 / 活動絞回風口

Return Air Louver



防水柏葉風口

Water Proof Louver



線條出風口

(包括任何類型的角度及弧狀)  
Linear Diffuser  
(Including any Angle or Curve)



或其他鋁製出風口類型

Or Other Aluminum Made Air Outlet



牛眼噴射口

Jet Nozzle



單葉 / 雙葉出風口

Single / Double Deflection Diffuser



樣板 Sample



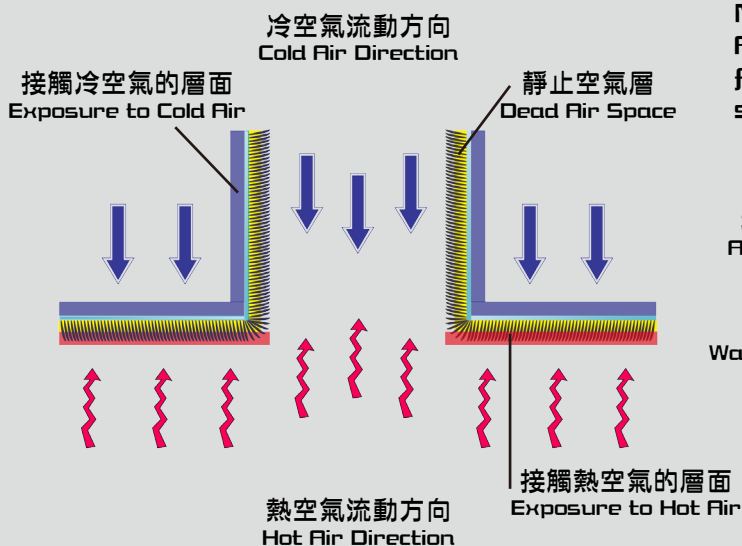


## 防止冷凝水凝結及滴落 Stop the form of Condensation Water & Dripping

### 第一道防線：隔熱保溫 Line of Defense #1 : Heat Insulation

索。鋁的隔熱保溫效能源於物理學上具絕緣性的「靜止空氣層」。鋁材質在經過多重工序處理後，其表面充滿著多層分佈的纖維毛絨間隔，而每個間隔中均佈滿靜止空氣，形成靜止空氣層，從而減少冷熱空氣因對流而接觸的機會，有效地降低熱交換系數。原理跟充滿著成千上萬個靜止空氣洞的絲棉被保溫性質相同。

The concept of heat insulation on Anti-Drop diffuser is base on the Physical principle called "Dead Air Space Insulation". After multiple processing, aluminum material filled with multi-layer nylon fiber interval on the surface, each interval is covered with dead air, form a dead air space, so as to reduce the chances of hot and cold air exposure due to convection, and reduce heat exchange coefficient effectively.



### 阻燃 Fire Retardant

鋁材質本質上具阻燃性，而其外層所包裹著的高密度短纖維層亦經化學改性處理，加入無鹵阻燃劑，令其阻燃性能更為優越，同時杜絕燃燒時有毒及腐蝕性的氣體產生，亦減低了燃燒時所產生的煙霧。

## 索。鋁雙重功效

### 隔熱保溫 Heat Insulation

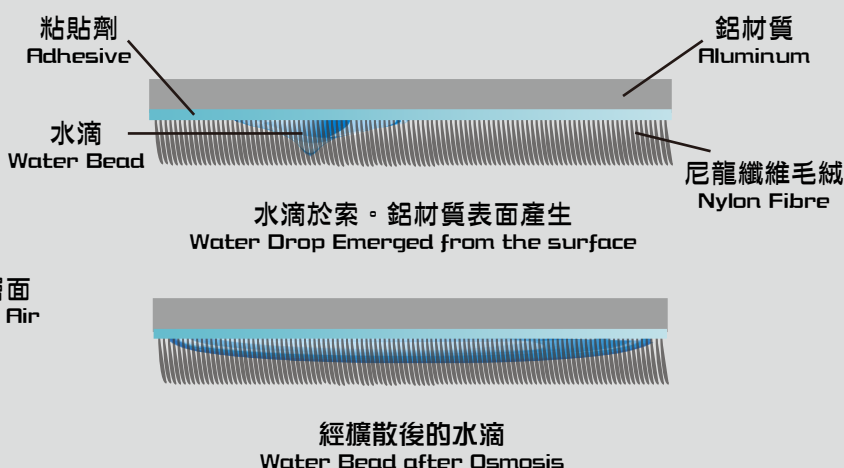
### 索乾水份 Hydrophile

## 助你高效解決倒汗水問題

### 第二道防線：索乾水份 Line of Defense #2 : Hydrophile

當環境、氣候及溫差都處於惡劣階段，而靜止空氣層亦無法阻擋冷熱空氣接觸的情況下，纖維毛絨自身的吸水特性便會發揮作用。冷凝水水滴會於冷熱空氣交接時在出風口表面凝結，帶有吸水性的纖維毛絨同時藉著滲透作用把水滴吸收並把水份擴散至四周的毛絨。而被吸收的水份會均勻的散佈於毛絨上，待空氣中濕度或氣壓降低時，再透過蒸發作用返回大氣中。

Absorbent nylon fiber plays a role when dead air space insulation cannot stop the exposure between cold air and hot air. Once it is happened, climate, temperature or even the whole environment were under an extremely bad condition. Condensation will take place on the diffuser surface while cold and hot air are exposing. Condensate water is absorbed by nylon fiber. Meanwhile spread to the surrounding by osmosis. Absorbed water will be evenly spread over the nylon fiber field, until the reduction of humidity and atmospheric pressure occurs.

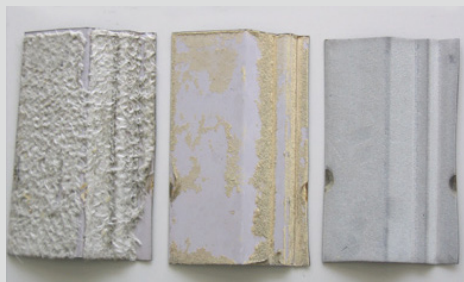


Aluminum is an inherently flame retardant. The high density nylon fiber has been chemically modified, by adding Halogen free flame retardant, in order to improve flame retardant properties, but also put an end to the toxic and corrosive gases, reducing the smoke produced during burning.

## 持久性強 / 耐衝擊 Durable / Impact Resistance

與同為用於表面處理的玻璃纖維、泡沫噴塗相比，索。鋁出風口所選用的短纖維毛絨配以特製粘貼劑更能對抗因長時間而引起的粘合力退化問題。同時在抵受硬物衝擊的情況下，短纖維毛絨仍能牢固地粘附在鋁材質上，不會剝落。

In comparison with fiber glass and foam spray, nylon fiber even can resist adhesion degradation due to the long period of time. The high viscosity adhesive makes a good firm bond between aluminum material and nylon fiber, therefore, they are good enough to withstand any impact without peel off.



貼玻璃纖維板 貼泡沫塑料 索。鋁材質

## 耐腐蝕性 Corrosion Resistance

索。鋁材質的耐腐蝕能力比熱鍍鋅鋼更佳。右圖為兩者在經過腐蝕測試後的結果。明顯地，熱鍍鋅鋼表面發生銹蝕情況，而經處理後的纖維毛絨層卻未發生銹蝕。

Anti-Drop material has better corrosion resistance than galvanized steel. Photos on right have shown the result of corrosion test. Obviously, rust happened on galvanized steel surface, however, it doesn't occur on Anti-Drop material.



熱鍍鋅鋼 索。鋁材質

## 多款顏色 Variety of Colours

除了黑、白、灰三色外，索。鋁材質亦備有多種顏色可供選擇。客戶可按實際需求選取適合的顏色。右方為其中數十種顏色，以供參考。

Black, White and Grey are the most common colour in the industry. Beside, a wide range of colours are available too. Customers are able to select the suitable colour to meet their actual needs.

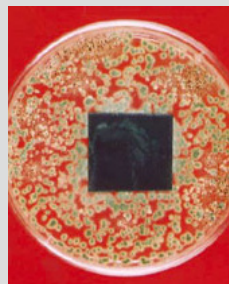


## 防霉 Mildewproof

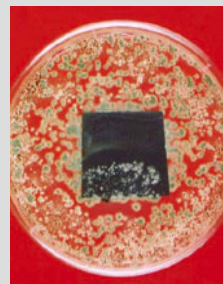
索。鋁出風口的表面層經過防霉處理，能有效地抵擋霉菌。下圖為將未經處理及已經處理的索。鋁材質放於霉菌培養皿中四星期後的結果。

The nylon fiber that use for the Anti-Drop diffuser has been gone through the anti-mildew treatment, in order to resist mold effectively. Following are the result for both treated and untreated nylon fiber put into a mold culture dish for four weeks.

已做防霉處理的索。鋁材質



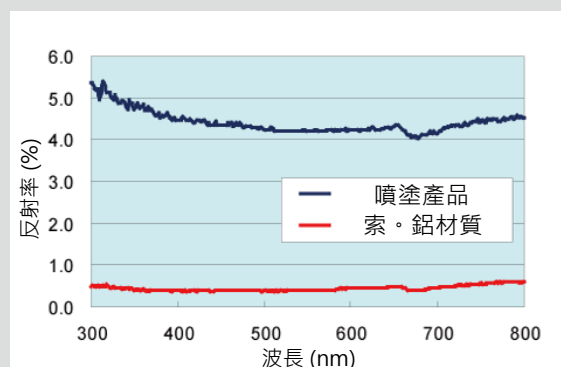
未做防霉處理的索。鋁材質



## 高吸光性 High Light Absorption

相對於油漆噴塗處理，經短纖維毛絨處理後的產品，其對光的反射率比噴塗處理的為低。

In terms of light reflection, Anti-Drop material has lower light reflect than normal painting.



統達冷氣製品有限公司  
STATE RICH  
Air Conditioning Products Limited

香港觀塘工業中心一期四樓 N 室  
Phone : (852) 2344 1607 Fax : (852) 2344 6769  
E - mail : staterich@hotmail.com  
Website : <https://sites.google.com/site/staterichproducts>